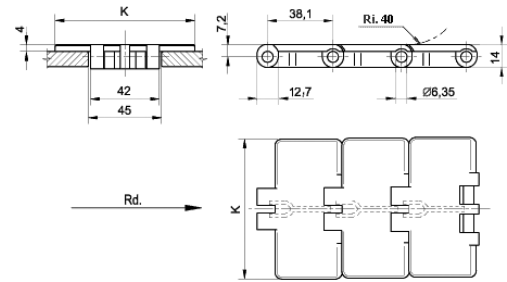


→ → LF 820 T=4mm / LF 831 T=5mm

Chain No.	Width K mm	GC Straight Curve mm	Working load KN (max)
LF 820-K250	63.5	44.5	1.23
LF 820-K325/831	82.6		
LF 820-K400	101.6		
LF 820-K450	114.3		
LF 820-K600	152.4		
LF 820-K750	190.5		

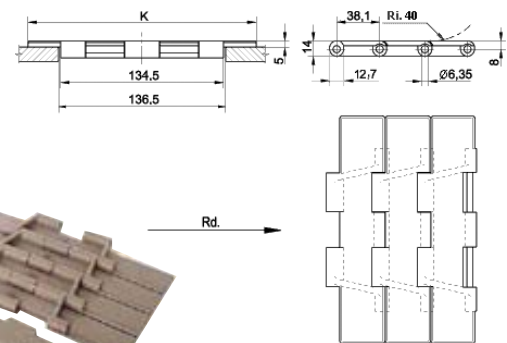
Material: LF Acetal Brown  
 Pitch: 38.1 mm  
 Standard length: 10 ft (3.048m)



→ → LF 821 (HEAVY DUTY)

Chain No.	Width K mm	Working load KN (max)
LF821-K750	190.5	2.6
LF821-K1000	254	
LF821-K1200	304.8	

Material: LF Acetal Brown  
 Pitch: 38.1 mm  
 Standard length: 10 ft (3.048m)



→ → LF RO821 / RO831

Chain No.	Width K mm	GC Straight Curve mm		Working load KN (max)
		Min	Max	
LF RO831-K325	190.5	42.5	44.5	2.6
LF RO821-K750	82.6			

Material: LF Acetal Brown  
 Pitch: 38.1 mm  
 Standard length: 10 ft (3.048m)

