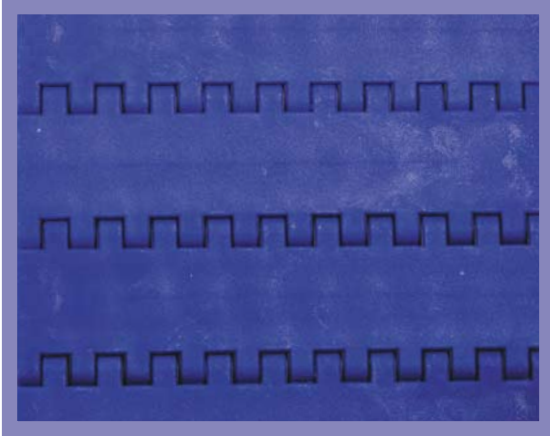


50-908



- ➔ Belt surface: Flat top.
- ➔ Open area: Closed
- ➔ Strength: The right belt for very-heavy applications.
- ➔ Material/colour: POM, PP.
- ➔ Accessories: 75 mm flight.
- ➔ Application:
 - Very heavy transportation.
 - Assembling belt for cars.
 - Truck loading systems.
 - Pollets.

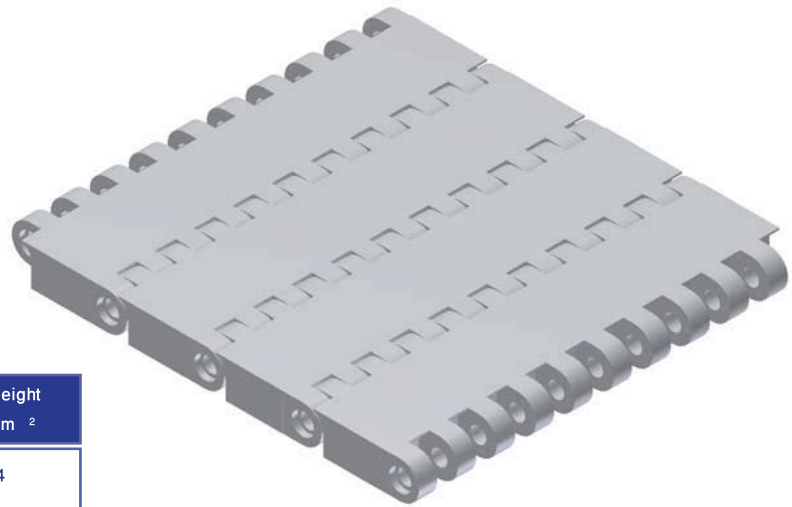
HUB SPECIFICATION

	Number of teeth 12Z
Square bore (mm)	40x40 60x60

bore available in inch size

BELT DATA

Materials	Max. belt pull kg/m of width	Belt weight kg/m ²
Polypropylene (PP)	6000	14
Polyacetal (POM)		17



SPROCKET DATA

No. of teeth Z	A=Outside diameter (mm)	B=Pitch diameter (mm)	C=Inside diameter (mm)	Sprocket width (mm)
12	210	191	172	38



1:1

