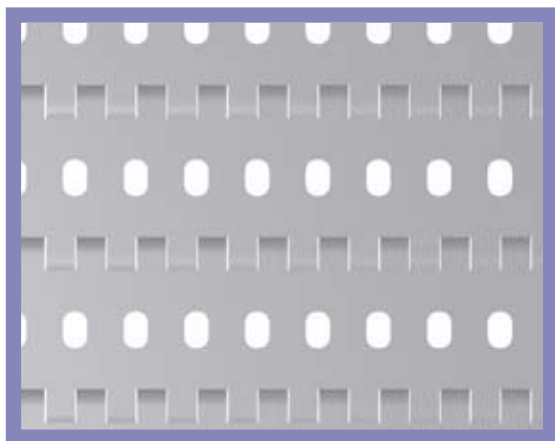


50-906



- Belt surface: Perforated flat top.
- Open area: 13 %. Biggest opening 7 x 11 mm.
- Strength: The right belt for very heavy applications.
- Material: PP, POM.
- Accessories: 75 mm flight.
- Application: Very heavy transportation.
Assembling belt for cars.
Truck loading systems.

HUB SPECIFICATION

	Number of teeth 12Z
Round bore (mm)	60ø 80ø 90ø
Square bore (mm)	40x40 60x60

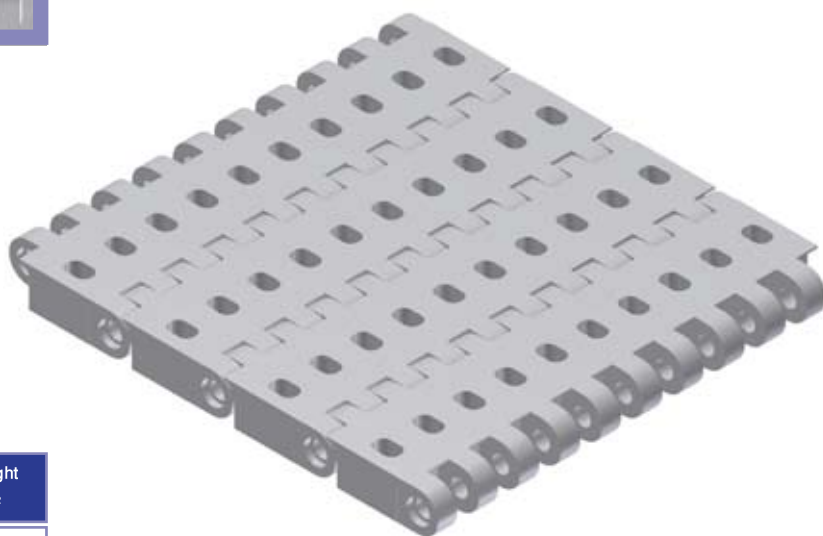
bore available in inch size

BELT DATA

Materials	Max. belt pull kg/m of width	Belt weight kg/m ²
Polypropylene (PP)	6000	13
Polyacetal (POM)		16

SPROCKET DATA

No. of teeth Z	A=Outside diameter (mm)	B=Pitch diameter (mm)	C=Inside diameter (mm)	Sprocket width (mm)
12	210	191	175	38



1:1

