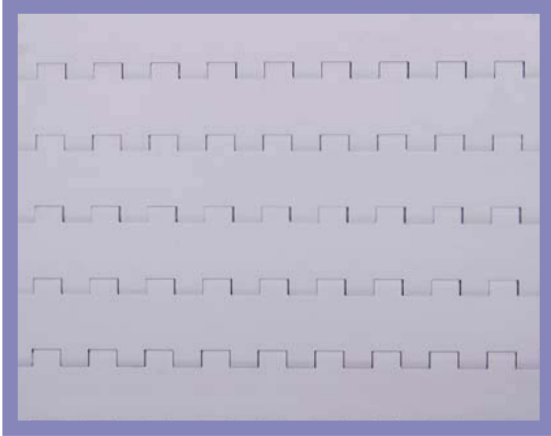


25-408



- ➔ Belt surface: Flat top.
- ➔ Open area: Closed.
- ➔ Strength: Strongest belt in the 25 series.
Ideal for medium weight transportation.
- ➔ Material: PE, PP, POM.
- ➔ Accessories: 25 and 50 mm flights.
25 and 50 mm side guards.
- ➔ Application: Transport of small products.

HUB SPECIFICATION

	Number of teeth			
	6Z	8Z	12Z	20Z
Round bore (mm)	20ø	20ø 25ø	25ø 30ø 40ø	25ø 30ø 40ø
Hexagon bore (mm)	24x24x24			
Square bore (mm)		25x25	25x25 38.1x38.1 40x40	38.1x38.1 40x40 60x60

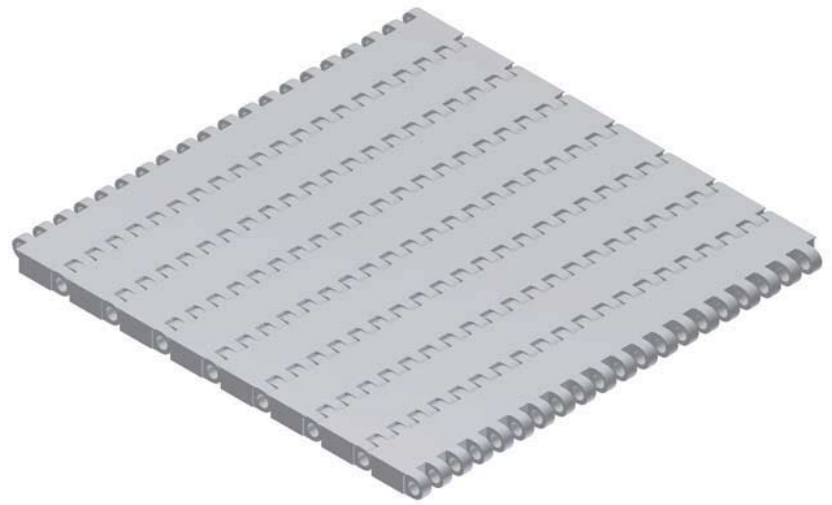
bore available in inch size

BELT DATA

Materials	Max. belt pull kg/m of width	Belt weight kg/m ²
Polyethylene (PE)	900	6
Polypropylene (PP)	1250	6
Polyacetal (POM)	2400	8.5

SPROCKET DATA

No. of teeth Z	A=Outside diameter (mm)	B=Pitch diameter (mm)	C=Inside diameter (mm)	Sprocket width (mm)
6	54	45	36	18
8	70	61	52	18
12	104	95	86	18
20	169	160	151	25



1:1

