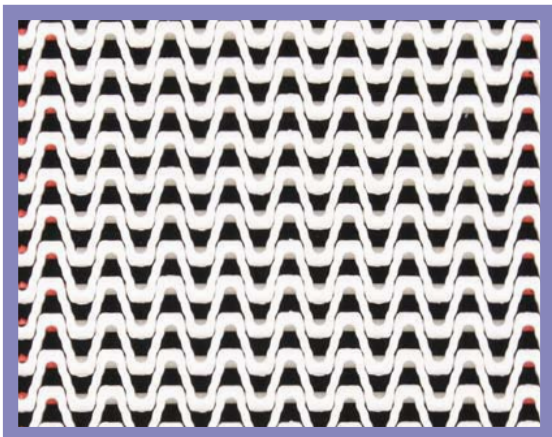
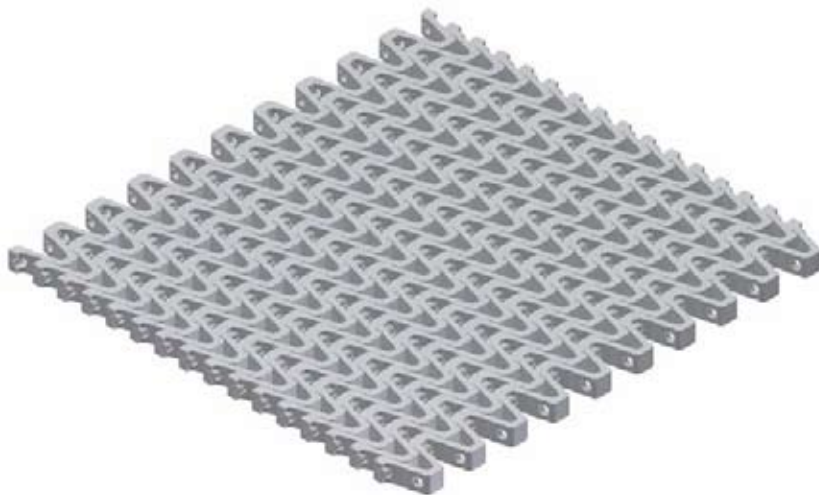


# 12-400



- Belt surface: Open belt with a smooth surface.
- Open area: 40% Biggest opening 6x8 mm.
- Strength: Ideal choice for light transportation.
- Material: PE, PP, POM.
- Application: Cooling belt for small nose bar/transfer.



### HUB SPECIFICATION

	Number of teeth			
	10Z	19Z	24Z	28Z
Round bore (mm)	20ø	20ø	20ø	25ø
		25ø	25ø	30ø
		30ø		40ø
Square bore (mm)		25x25	25x25	25x25
		40x40	40x40	40x40

bore available in inch size

### BELT DATA

Materials	Max. belt pull kg/m of width	Belt weight kg/m <sup>2</sup>
Polyethylene (PE)	600	3.5
Polypropylene (PP)	800	3.5
Polyacetal (POM)	1450	4.8

### SPROCKET DATA

No. of teeth Z	A=Outside diameter (mm)	B=Pitch diameter (mm)	C=Inside diameter (mm)	Sprocket width (mm)
10	50	42	33	8
19	84	76	67	12
24	104	96	87	12
28	120	112	103	12



1:1

